



Top speed of
270 m²/h



Direct to textile or on
transfer paper



Single-operator
control



Vibrant colors



Low ink
consumption



AVINCI CX3200

Dye sublimation roll-to-roll printer that can print both directly to textile and to transfer paper, at a speed of up to 270 m²/h. Create vibrant, high-quality soft signage up to 3.2 m wide for both in- and outdoor applications using this reliable and easy-to-use engine.

AGFA 



Create stunning soft signage

Agfa's dedicated dye sublimation roll-to-roll printer will enable you to create high-quality prints on polyester-based fabrics up to 3.2 m wide, including a broad range of in- and outdoor soft signage applications, as well as interior decoration and sportswear. The Avinci CX3200 is able to print directly to fabrics, as well as onto transfer paper. It uses an off-line calender to ensure perfect fixation.

Soft signage – luxury look, easy handling

Soft signage is a perfect solution for businesses looking for high-quality and easy-to-handle marketing and display materials. Not only do they have a vibrant and luxurious look, they are also light-weight and easy to transport and install, which make them user-friendly as well as cost-effective.

Direct & transfer printing – for the widest application scope

The C in Avinci CX3200 stands for 'combined', as this printer can print both directly to fabric, as onto transfer paper, with the same ink. This results in a very wide applications scope.

The Avinci can print a wide variety of polyester-based soft signage applications such as backlit, point-of-sales displays, indoor wall graphics, block-outs, backdrops, in- and outdoor flags, or retail store décor elements. In addition, it can also be used to print polyester-based sportswear or fashion garments. You name it, Avinci is up to the challenge.

- Being able to print directly to fabric is easy and ideal for fast handling and for special applications such as flags, where print-through is needed.
- Transfer paper allows for super sharp prints, eliminates set-off, and limits media waste to a minimum. In addition, it extends the application scope to sportswear and fashion garments, as well as home décor prints on non-coated polyester fabrics.





Reliable and convenient

We know that productivity and flexibility are critically important in your business. Thanks to its speed, reliability and ease of use, the Avinci CX3200 ensures fast and trouble-free operations that will enable you to maximize your operational uptime and to focus on your customers.

Smooth and accurate media handling

Featuring a dedicated soft signage media transport system, the Avinci engine ensures precise and easy unwinding and feeding of the media, as well as the perfect wind-up of the prints. Even at the highest production speed, all media are transported flawlessly through the roll-to-roll printer. When printing on transfer paper, the vacuum plates make sure that the media are kept perfectly flat on the table and will not wrinkle. The powerful drying system limits drying time and reduces set-off.



Fast and easy changeover

You will not find a textile printer that is as easy to use as the Avinci. Thanks to the convenient pinch rollers and foot pedal, changeover between jobs is fast and easy. Loading a new roll can be done in less than seven minutes by a single operator!

Robust design & low maintenance

The Avinci CX3200 has a robust design, using only high-quality parts that are built to last. This means you can expect few service interventions and a minimum of consumables consumption. The Kyocera water-based print heads are known for their reliability and long life. Maintenance gets limited to a minimum too. The Avinci's automatic head cleaning will make operators' lives easier. In addition, it's a breeze to service print heads, filters, and to monitor ink levels with the printer's easily-accessed print shuttle.



World-class training and support, anywhere you need it

If you purchase an Agfa solution, your operators will get trained directly by Agfa's global support team. Have a question or did you run into an issue? Our experienced service technicians and application experts throughout the globe are there for you.

Avinci: High productivity. Splendid colors.



CLEAN AND ERGONOMIC INK SUPPLY SYSTEM
Easily accessible 5-liter containers allow for long uninterrupted printing.



VACUUM ZONE
Keeps thin transfer papers perfectly flat, ensuring accurate alignment and wrinkle-free printing.

WRINKLE-FREE MEDIA TRANSPORT
Carbon shafts, spreader rollers and a balancer roll guaranteeing stable tension make sure media transport is smooth and wrinkle-free at any speed.



POWERFUL DRYING SYSTEM
The dryer quickly dries inks and drastically limits set-off. Together with the vacuum table, it guarantees that thin transfer papers lie perfectly flat on the table and will not wrinkle.



OFF-LINE CALENDERING

An off-line calender fixes the color deeply into the structure of the polyester-based fabrics while evaporating the carrier fluid.

AUTOMATIC HEAD HEIGHT ADJUSTMENT

The heads are automatically adjusted to the height of the media, which can be up to 3 mm thick.

SHUTTLE SAFETY SENSORS

Prevent print heads from touching the substrate and getting damaged.



AUTOMATIC PRINT HEAD CLEANING

Smart automatic spitting prevents nozzles from clogging.



INTUITIVE GUI

The advanced touch screen GUI buttons provide details about the status of the printer, ink levels, settings and required maintenance. A list shows which jobs are ready to be printed, in queue, or already finished. 'Media recipes' control all parameters for a particular substrate.

AIR-PRESSURIZED TAKE-UP SHAFT

Ensures accurate and safe media feeding.



CONVENIENT & FAST SINGLE-PERSON OPERATION

Thanks to the convenient pinch rollers and foot pedal, changeover between jobs is quick and easy. Loading a new fabric roll can be done in less than seven minutes by a single operator.



Vivid colors, high performance

The Avinci CX3200 boasts a rich color gamut and delivers deep blacks, perfect solids, accurate spot color mapping and smooth tonal rendering that is particularly noticeable in skin tones. Through the process of dye sublimation, your soft signage prints will look simply amazing.

The Avinci inks are characterized by their flexibility, image longevity and outdoor resistance. They offer stable jetting performance and deliver the same high-quality results, batch after batch.

Low ink consumption

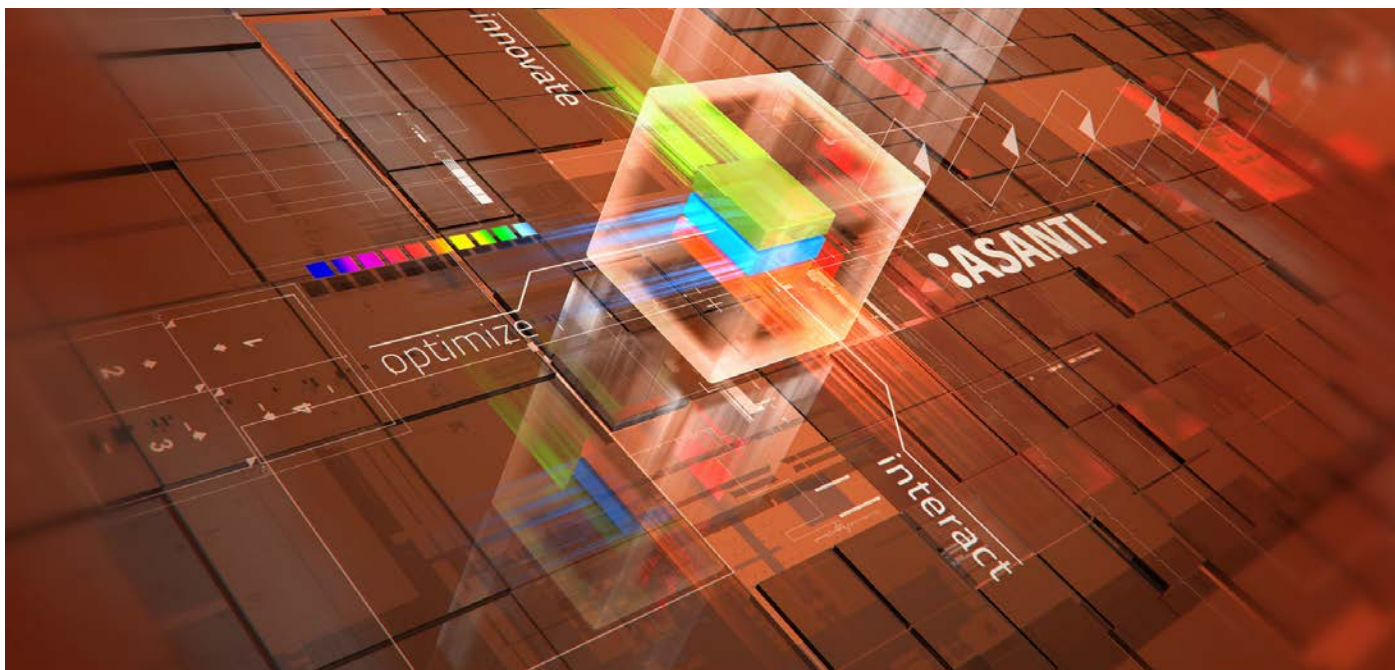
Avinci produces excellent results with a minimum of jetted ink. This low ink consumption is based on Agfa's renowned Think Ink Layer technology: a smart combination of particular ink characteristics and our Asanti workflow software algorithms that tune the ink quantities perfectly to the required image quality mode. As the amount of ink needed is one of the most important factors in calculating the cost of ownership for inkjet engines, this is a true asset.



Avinci offers you:

- High productivity and a robust design for reliable printing at all times;
- Vibrant prints thanks to the wide color gamut;
- Excellent print quality and fine detail rendering;
- Extensive applications scope;
- Convenient operations and a fast changeover between jobs;
- Low ink consumption;
- Complete and integrated solution: printer, inks, workflow software, worldwide service and applications support





Powered by Asanti workflow software

The Avinci CX3200 is driven by Agfa's Asanti wide-format workflow software. Asanti controls and automates the entire printing process from file intake to finishing, maximizing productivity. Its comprehensive integration of file handling, color management and preflighting guarantees smooth and error-free jobs.

Color accuracy is provided by the easy-to-use color management. Using our **Calibrated Print Mode feature**, new media can be calibrated and profiled in less than 15 minutes, after which the new profiles can be used to guarantee print quality.

In addition, Asanti's smart imaging algorithms help optimize ink consumption, and consequently reduce your production costs as well as your environmental footprint.

The web-based **Asanti Production Dashboard** offers a view on your running production. It summarizes the jobs produced and reports on quantity printed, media usage, ink volumes... enabling you to control your production and to manage your print shop optimally.

Signs and banners

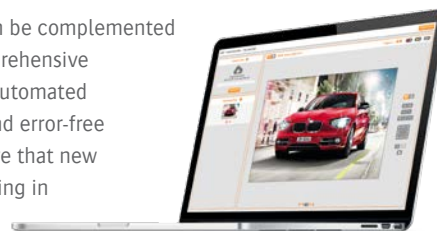
Asanti offers a series of value-added features for soft signage makers such as the automated positioning of cutting marks and grommets on the banners, or the easy design of canvas extensions for the creation of flag pole pockets.

Nesting

Using the nesting module embedded in Asanti, you can nest artwork and optimize the media surface used during the print cycle. The tiling module supports irregular shapes and minimizes media waste during cutting.

Web-to-Print

The Avinci CX3200 can be complemented by **StoreFront**, a comprehensive web-to-print service. Automated payment processing and error-free print preparation ensure that new jobs are ready for printing in no time and with a minimum of operator intervention.



Easy file sharing

The Avinci CX3200 easily integrates with **PrintSphere**, which allows printing companies to automate their workflows, to simplify and accelerate file sharing, and to collaborate effortlessly with customers – all while maintaining secure and safe data transfer and storage.

StoreFront and PrintSphere are cloud services available in a 'software as a service' model.



Extreme productivity. Extreme quality.

Reach new heights in printing quality and productivity for all your inkjet signs and displays. Go beyond current printing standards and produce extremely vivid prints at dazzling speeds. Experience the best of both worlds with Agfa. Outstanding quality has never come at a swifter pace.

Enter a new era of extreme productivity and quality with Agfa's inkjet printing solutions!

Technical specifications Avinci CX3200

MEDIA & PRINTING SPECIFICATIONS	
FLEXIBLE MEDIA	
Max print width	Single roll = 3.20 m (126.0")
Max roll width	Single roll = 3.26 m (128.5")
Maximum length	>100 m length (also depends on the thickness and total roll weight)
Max media thickness	Max. 3 mm (0.12")
Maximum weight	Single roll in full width: 220 kg (485 lbs)
Maximum roll outside diameter	300 mm (11.8")
Roll mounting	Pneumatic shafts for core diameter 7.62 cm (3") (standard)
Media skew	Max. 2 mm on 10 m printing
Borderless printing flexible media	Single roll = up to 3.2 m (126")
Media transportation	Dancer bars and print plate suction for roll-to-roll
PRODUCTIVITY	
Open fabric: in- & outdoor flags Closed fabrics: displays	70 to 270 m ² /h (753 to 2906 ft ² /h)
Closed fabric with diffusion layer: backlit displays	35 to 110 m ² /h (377 to 1184 ft ² /h)
Transfer paper	70 to 270 m ² /h (753 to 2906 ft ² /h)
MEDIA	
Media types	Polyester-based fabrics, or transfer paper used to create banners, indoor wall graphics, shop decoration, outdoor advertising, light boxes, trade show displays, flags and high polyester-based blends
PRINT HEADS & INKS	
Print heads	Kyocera KJ4B-0300
Ink	CMYK
Ink system maintenance	Automatic
IMAGE & TEXT QUALITY	
Image quality	Resolution up to 600 x 1200 dpi
ENGINE DIMENSIONS & WEIGHT	
Printer dimensions & weight (W x D x H)	Uncrated: 5240 mm x 1200 mm x 1700 mm (207" x 47.2" x 66.9") Crated: 6490 mm x 1840 mm x 2160 mm (256" x 73" x 85")
Printer weight	Uncrated: 1280 kg (2822 lbs) Crated: 2100 kg (4630 lbs)
ROOM CONDITIONS	
Temperature	20-25°C
Relative humidity	40-80%
ELECTRICITY & COMPRESSED AIR	
Electricity	Engine: single phase 220-240 VAC (50/60 Hz) 12A (Fuse 16 A) Dryer: single phase 220-240 VAC (50/60 Hz) 28A (Fuse 30 A)
Compressed air	Dry and oil-free (Class 1 according to ISO 8573-1 2010) 200 l/min – 6 Bar
SYSTEM INTEGRATION RIP/WORKFLOW SOFTWARE	
Asanti, PrintSphere, third-party rips	

www.agfa.com

© Copyright 2021 by Agfa NV. All rights reserved.

Agfa and the Agfa rhombus are trademarks of Agfa-Gevaert NV Belgium or its affiliates. Avinci and Asanti are trademarks of Agfa NV, Belgium or its affiliates. All other brand and product names may be service marks or trademarks of their respective owners. All product specifications are subject to change without prior notice. All information contained in this document is intended for guidance purposes only, and specifications are dependent on media.